



Apt 1, Elizabeth House, 18-20 Sheet St Sheet Street, Windsor, SL4 1BG
£350,000

 **HORLER**

Apt 1, Elizabeth House, 18-20 Sheet St Sheet Street, Windsor, SL4 1BG

** VARIABLE PRICE RANGE - £350,000 - £400,000 **

INCREDIBLE OPPURTUNITY TO OWN A PIECE OF PRIME TOWN CENTER LOCATION

Elegant urban oasis: 90 sq.m apartment in prestigious Elizabeth House. Modern design meets luxurious comfort, offering a canvas for your ideal lifestyle in the heart of Windsor.



Property Summary

Step into a world of refined elegance and contemporary comfort in this exquisite apartment at Elizabeth House. This stunning 90 square meter space is a testament to modern design, offering a lifestyle that seamlessly blends sophistication with practicality.

As you enter, you're greeted by an abundance of natural light that floods through the space, highlighting the pristine white walls and creating an atmosphere of openness and serenity. The gleaming hardwood floors in the living areas add warmth and character, inviting you to relax and unwind.

The heart of this home is the sleek, state-of-the-art kitchen. Boasting clean lines and a minimalist aesthetic, it features high-gloss cabinetry, cutting-edge appliances, and ample counter space. This culinary haven is perfect for both everyday meal preparation and elegant entertaining.

The luxurious bathroom is a spa-like retreat, complete with a deep soaking tub, modern fixtures, and a heated towel rack. The attention to detail is evident in every corner, from the stylish tiling to the large mirror that enhances the sense of space.

Generous bedrooms offer plush carpeting underfoot and built-in mirrored wardrobes, providing both comfort and functionality. Recessed lighting throughout the apartment creates a soft, ambient glow, perfect for setting the mood for any occasion.

This apartment is not just a living space; it's an opportunity to embrace a lifestyle of comfort, convenience, and sophistication. Located in the desirable Berkshire area, you'll be at the heart of cultural experiences, fine dining, and upscale shopping. Your new life of luxury starts here at Elizabeth House.

General Information:

Lease - 141 Years

Service Charge - £2,400.00 pa

Ground Rent - £350.00 pa

Council Tax: E

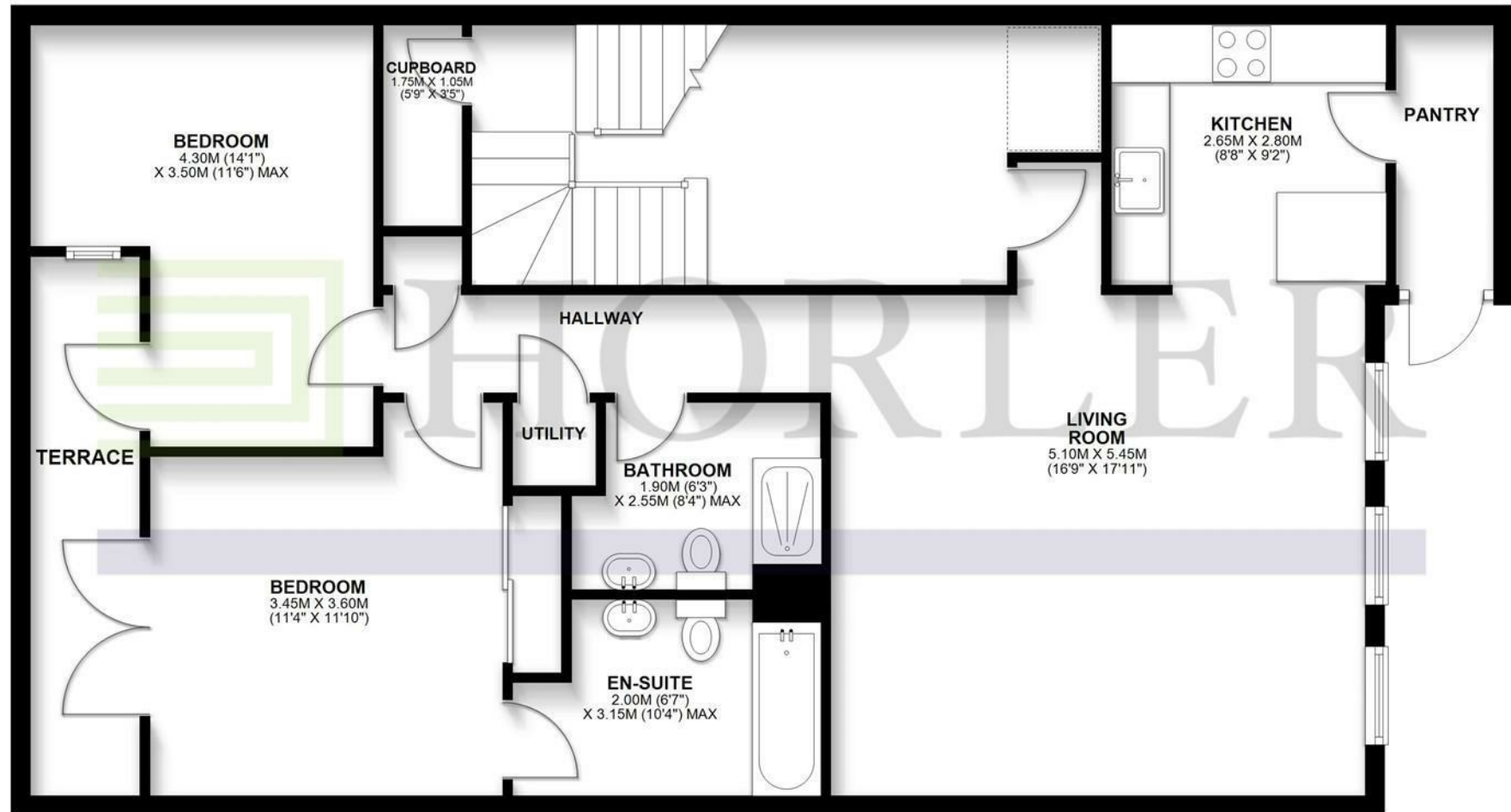
Legal Note:

Although these particulars are thought to be materially correct their accuracy cannot be guaranteed and they do not form part of any contract.





GROUND FLOOR



TOTAL AREA: APPROX. 93.6 SQ. METRES (1007.3 SQ. FEET)

This floor plan is for illustrative purposes only. It is not drawn to scale. Any measurements, floor areas (including total floor area), openings and orientations are approximate. No details are guaranteed, they cannot be relied upon for any purpose and do not form any part of any agreement. No liability is taken for any error, omission or misstatement. A party must rely upon its own inspection(s).